

XRF Pellet Dies



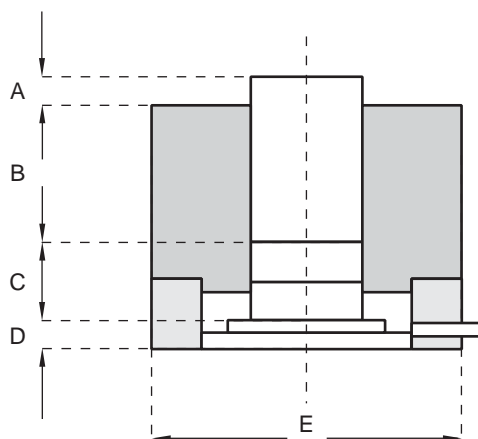
- Provide high polished pellets
- High quality hardened stainless steel gives better performance
- Evacuatable for sample pellet clarity and quality
- Dies Sets are complete with:
 - Evacuatable Die Body
 - Base
 - Plunger
 - Two polished stainless steel pellets
 - O-ring vacuum seals
 - Knock-out ring for sample extraction

Mechanical Dimensions

Pellet Diameter	Load Limit	A (mm/in)	B (mm/in)	C (mm/in)	D (mm/in)	E (mm/in)	Catalog Number
31 mm Die Set	50 tons	21.33/0.84	35.74/1.41	19.05/0.75	27.76/1.09	68.33/2.69	040-022-200
35 mm Die Set	70 tons	21.33/0.84	35.74/1.41	19.05/0.75	27.76/1.09	68.33/2.69	040-022-300
40 mm Die Set	50 tons	21.33/0.84	35.74/1.41	19.05/0.75	27.76/1.09	95.25/3.75	040-022-400

Replacement and Optional Pellets

Composition	Pellet Diameter	Catalog Number
Stainless Steel	31 mm	040-022-201
Stainless Steel	35 mm	040-022-301
Stainless Steel	40 mm	040-022-401
Tungsten Carbide	31 mm	040-022-202
Tungsten Carbide	35 mm	040-022-302
Tungsten Carbide	40 mm	040-022-402



XRF AluCAPs



- Provide lateral and bottom support during sample preparation
- Offers easy compaction due to thin wall construction
- Eliminates the loss of sample overflow
 - Flared wall construction
- Supplied in a convenient dispense box

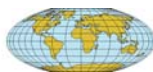
AluCAPs

Description	Diameter	For Die Set	Quantity	Catalog Number
AluCAP	30 mm	31 mm (040-022-200)	1000	040-080-001
AluCAP, Flarred	38 mm	40 mm (040-022-400)	1000	040-080-005

For more information, contact your **SCP SCIENCE** Sales Representative today!

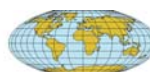
USA

Tel.: (800) 361-6820
Fax: (800) 253-5549



Canada / International

Tel.: (800) 361-6820 / (514) 457-0701
Fax: (800) 253-5549 / (514) 457-4499



Europe

Tel.: +33 (0)1 69 18 71 17
Fax: +33 (0)1 60 92 05 67